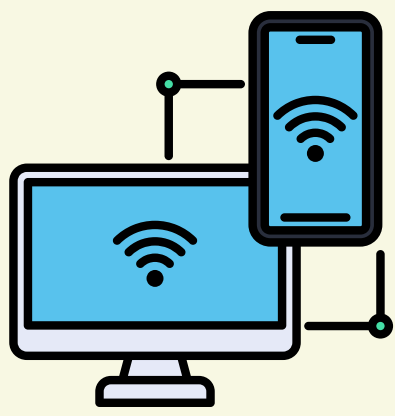


1

Connect to Wi-Fi



Connect your device to Nilai University Wi-Fi
(Access available only within campus network)

2

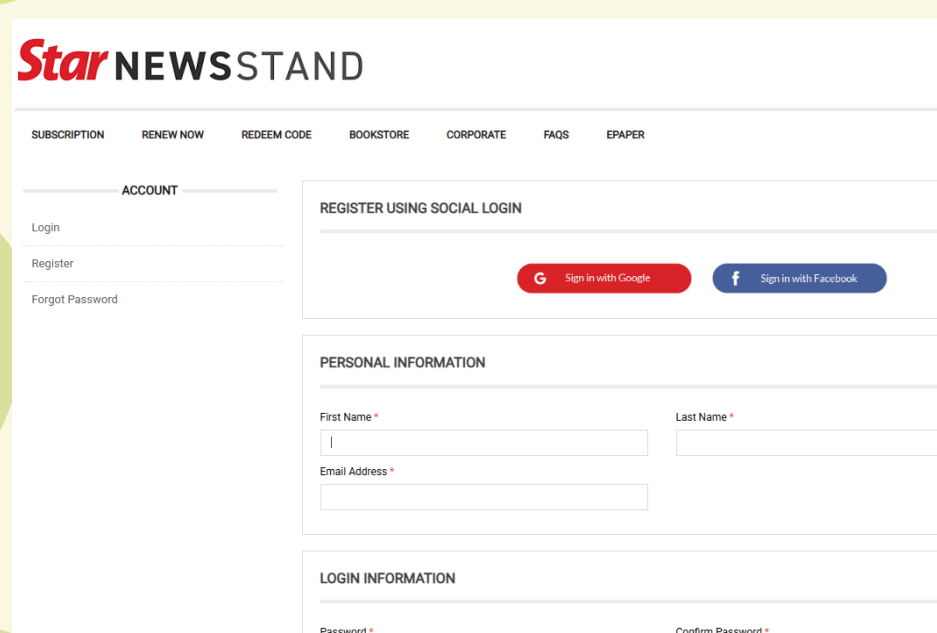
Access the Portal



Scan the QR Code or visit epaper.thestar.com.my using a web browser

3

Register (New Users)



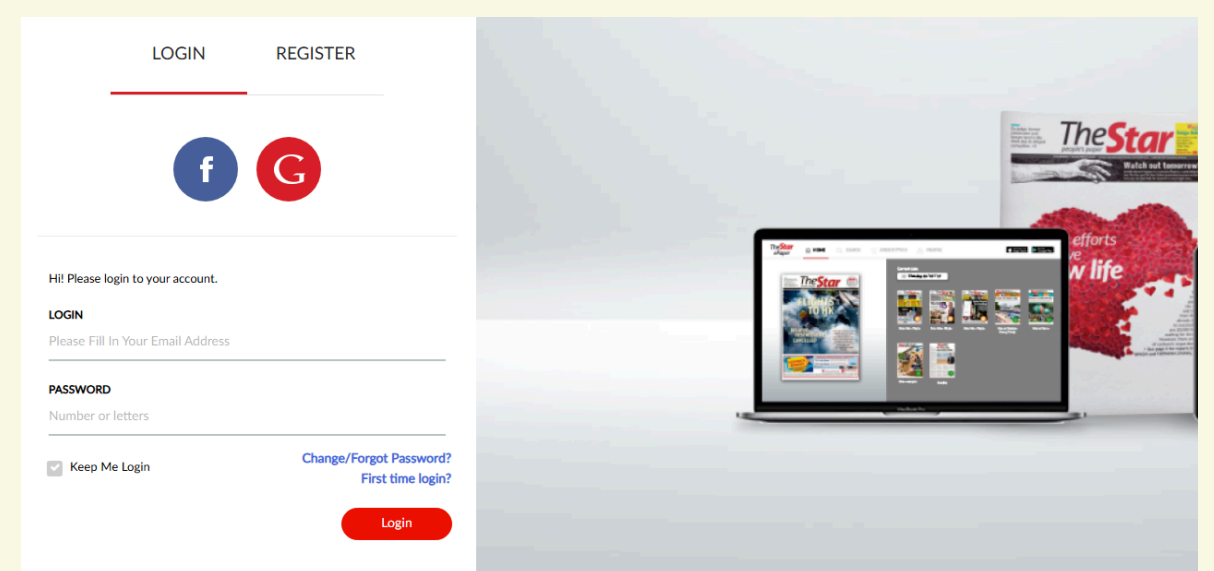
The registration form includes sections for: ACCOUNT (Login, Register, Forgot Password), REGISTER USING SOCIAL LOGIN (Sign in with Google, Sign in with Facebook), PERSONAL INFORMATION (First Name, Last Name, Email Address), and LOGIN INFORMATION (Password, Confirm Password).

Click REGISTER and create your account

- One-time registration only
- Use university or personal email
- One account supports up to 3 devices

4

Login (Returning Users)



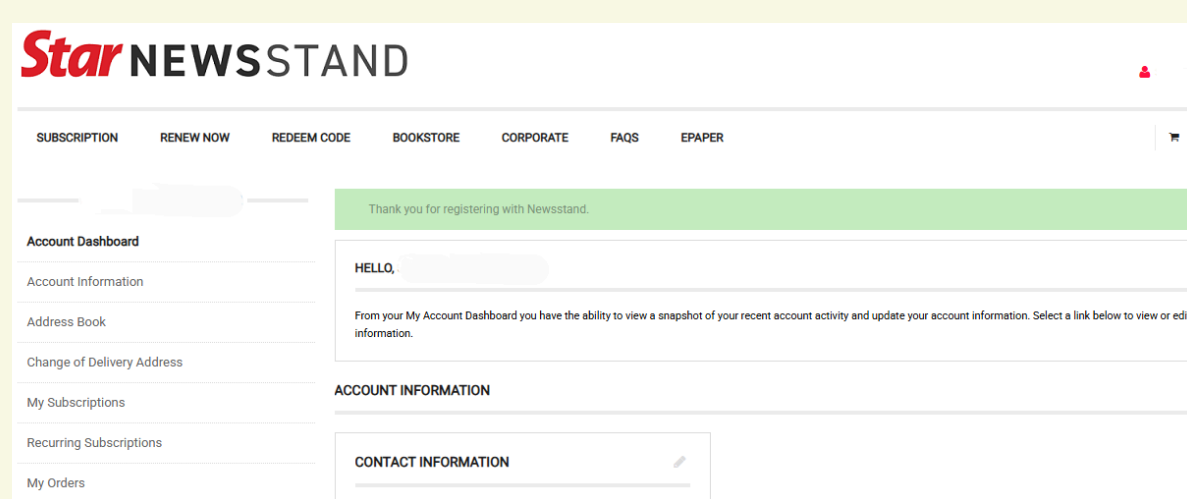
The login page includes fields for LOGIN (Please fill in Your Email Address) and PASSWORD (Number or letters). It also has a 'Keep Me Login' checkbox and links for 'Change/Forgot Password?' and 'First time login?'. A 'Login' button is at the bottom.

Enter your User ID and Password, then click Login

Forgot your password?
Click Reset Password

5

Access the ePaper

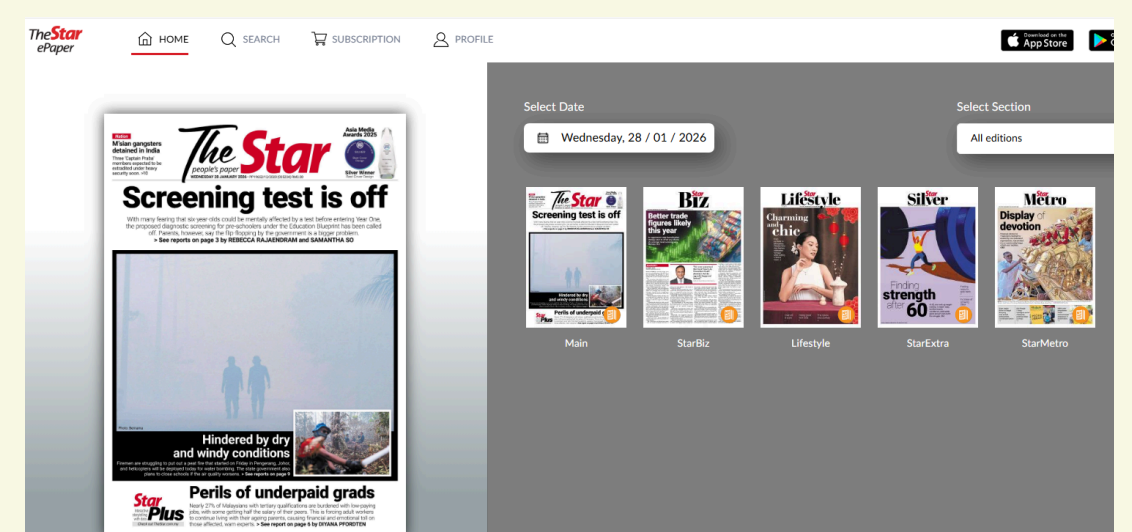


The account dashboard shows a 'Thank you for registering with Newsstand.' message. It includes links for Account Information, Address Book, Change of Delivery Address, My Subscriptions, Recurring Subscriptions, and My Orders. There is also a section for ACCOUNT INFORMATION and CONTACT INFORMATION.

After successful registration or login, click EPAPER at the top menu to access the newspaper

6

Start Reading



New edition daily from 6:00 a.m.

- Access past issues (up to 60 days)
- Audio Reader available
- Maximum 25 concurrent users

****If unable to access, please clear browser cache/history and try again**